



WGAS290 continuous flow aircraft jet engine start unit provides pressurized air to start jet engines. The start air pressure is adjustable up to 42 psig and delivers 290 pounds per minute flow. The unit consists of a diesel engine with proper horsepower rating, and air cooled, oil free rotary screw compressor and air regulating system, sound attenuation, and easy to operate control panel.

CHASSIS:

The unit can be trailer mounted or mounted on a customer's choice of chassis. The chassis choice is Isuzu NPR66 and should have a carrying capacity of at least 4.2 Tons or can be selected by the customer.

COMPRESSOR:

- **Aerzen:** oil-free, dual screw air compressor model VML410.
- **Integral oil cooler and fan**
- **Doubled sealed and ventilated intermediate chambers**
- **Integrated housing** bolts directly to the engine
- **Torsional isolation** between male compressor rotor and built in gearbox
- **Automatic speed reduction** decreases engine speed when full output is not required
- **Outlet air temperature** 410 deg. F (210 deg. C) on a std. day.

ENGINE:

Volvo TAD1630GE engine rated at 648 Hp (482kw) @ 1800 rpm, diesel engine with electronic governor. Alternator 24V 60Amp. Other engines available on request.

SAFETY SYSTEMS:

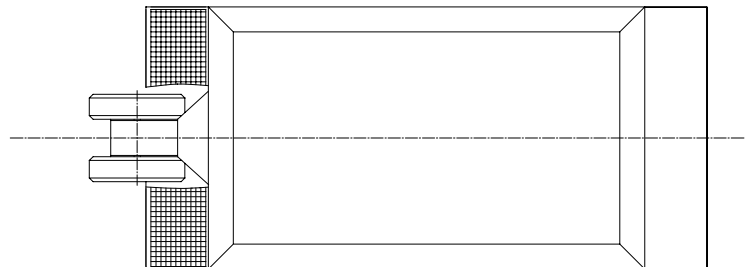
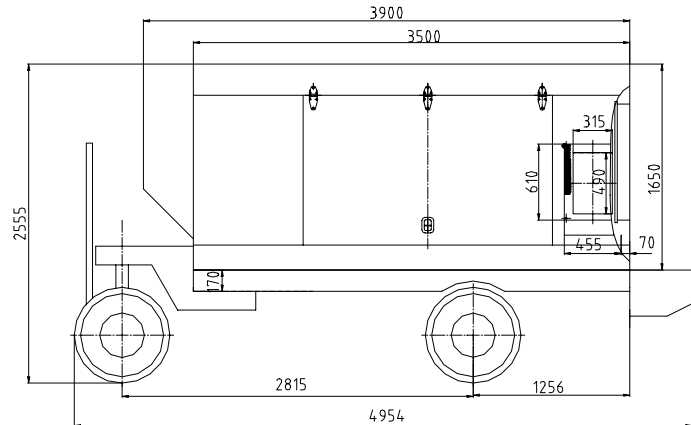
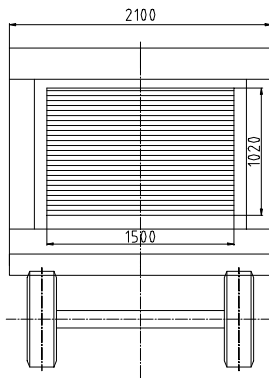
- **Aircraft:** dual over pressure protection. All other unit safety systems are eliminated during engine start.
- **Unit:** includes engine and compressor temperature and oil pressure with fault annunciator panel.
- **Airpacs/jet-start** modes both available
- **Two 3 1/2inch ID** outlets provided. Two 40 ft. hose and scuff jacket included.

	OPTIONAL EQUIPMENT
	<ul style="list-style-type: none"> • Cold weather starting aids • Fuel/water separator • Low fuel warning system

Specifications

Engine	Model	Volvo TAD1630GE
	Horse Power	646HP/1800RPM
Compressor Model (AERZEN)		VML 410
Air Flow		290 PPM
Air Pressure		41PSI
Mounting		Trailer/Truck
Length (Approx.) trailer/truck see note		195in(4954mm)/258 in (6560 mm)
Width (Approx.) trailer/truck		83 in(2100mm)/ 78 in (2100 mm)
Height (Approx.) trailer/truck		100 in(2555mm)/105 in (2665mm)

Note: dimensions for vehicle mounted units vary according to the chassis selected



Revised: August 2003

SPECIFICATIONS TO CHANGE WITHOUT NOTICE



WEIHAI GUANGTAI AIRPORT EQUIPMENT CO.,LTD.
 160 Guzhai South Road, Weihai, Shandong, 264200,
 Tel: 86-631-5251465 Fax: 86-631-5251451/5251565
 Web: www.guangtai.com.cn